



Ashburn Place, SW7

£4,900 per week Furnished

Fees may apply

1700 sq ft (158 m²) • Key Services & Amenities included in your rate are:

- 24/7 Concierge and Security
- Housekeeping service and change of linen and towels once a week
- Cinema Room





The Superior three-bedroom apartments are the ideal choice for those looking for spacious and luxurious accommodation, whether as a group of friends or when travelling with the whole family. These apartments are situated on the ground and lower three floors.

Each apartment has a fully fitted kitchen with modern Miele appliances as well as a Nespresso machine with capsules and takeaway cups. The Master bedroom, 2nd and 3rd bedrooms feature King size beds which can be twinned, and all beds are dressed in high-quality linen and pillows with plenty of storage. En-suite bathrooms are stocked with complimentary toiletries from Bulgari.

All three-bedroom apartments feature an additional cloakroom accessed from the entrance hallway.

Key Services & Amenities included in your rate are:

- 24/7 Concierge and Security
- Housekeeping service and change of linen and towels once a week
- Cinema Room
- Complimentary welcome hamper
- Air-Conditioning
- Complimentary Wi-Fi
- Complimentary Gym
- Secure Underground Car Parking (charges apply)
- Samsung smart TVs with

Approximate gross floor area:
1700 sq ft (158 m²)
Includes Cellar or Storage
Space where applicable

FOR ILLUSTRATIVE PURPOSES
ONLY. NOT TO SCALE.

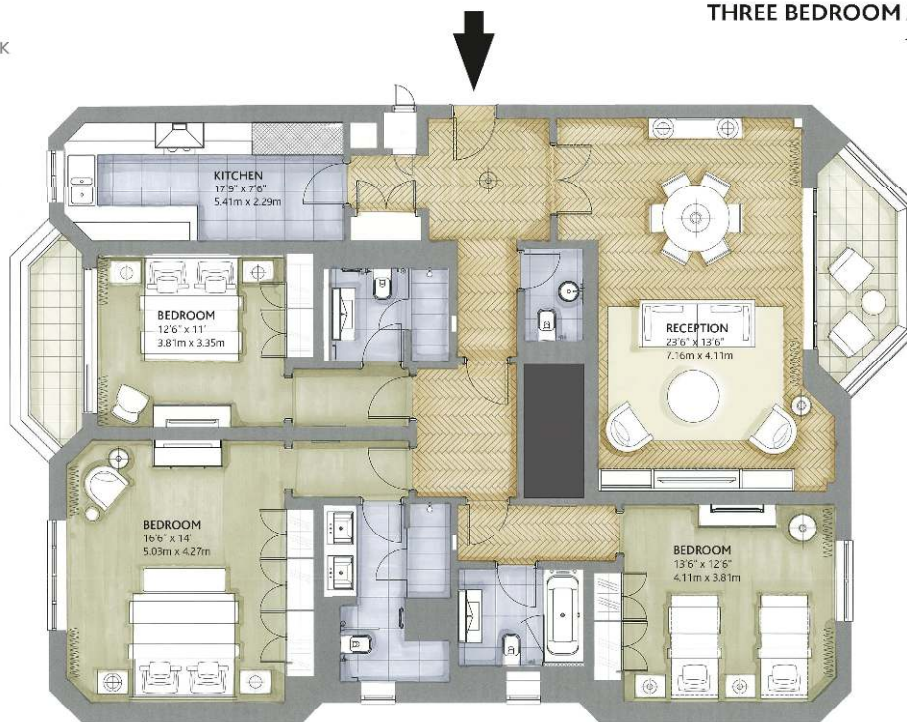
As defined by RICS code of
measuring practice

This floorplan is representative and for
illustrative purposes only. The measurements
provided are approximate only and not to
scale. They should not be relied upon by any
party. Prospective purchasers or tenants are
advised to carry out their own survey if they
require reliable measurements. No
responsibility is taken for any error, omission,
miss-statement or use of data shown.
Details Prepared: 2 December 2020



THREE BEDROOM APARTMENT

1700 sq.ft. | 158 m²



Please note all floor plan measurements and furniture placements are approximate and may not be to scale.

Good to know

Nearby station: Gloucester Road

60m (0 mins) (Line of sight)

Gross floor area: 1700 sq ft (158 m²)

Local authority: Kensington & Chelsea



* Fees may apply. For further details please go to <https://www.douglasandgordon.com/fees-and-terms-tenants>

Gloucester Road Office

22 Gloucester Road, SW7 4RB
grlets@dng.co.uk

020 7589 5252
douglasandgordon.com

