



Ashburn Place, SW7

£2,800 per week Furnished

Fees may apply

1194 sq ft (111 m²) • Key Services & Amenities included in your rate are:

- 24/7 Concierge and Security
- Housekeeping service and change of linen and towels once a week
- Cinema Room





The Superior two-bedroom apartments at Cheval Gloucester Park are perfect for families, couples, friends or colleagues sharing while staying in London for one night or more. These apartments are situated on floors one to three.

Each apartment has a fully fitted kitchen with modern appliances as well as a Nespresso machine with capsules and takeaway cups. The King size bed in the Master bedroom along with the Twin beds in the second bedroom are dressed in high-quality linen and pillows, plenty of storage and both en-suite bathrooms are stocked with complimentary toiletries from Bulgari. Most superior apartments feature an additional cloakroom accessed from the entrance hallway.

Key Services & Amenities included in your rate are:

- 24/7 Concierge and Security
- Housekeeping service and change of linen and towels once a week
- Cinema Room
- Complimentary welcome hamper
- Air-Conditioning
- Complimentary Wi-Fi
- Complimentary Gym
- Secure Underground Car Parking (charges apply)
- Samsung smart TVs with
- Luxury toiletries
- Fully fitted Miele kitchen with washing machine

Approximate gross floor area:
1194 sq ft (111 m²)
Includes Cellar or Storage
Space where applicable

FOR ILLUSTRATIVE PURPOSES
ONLY. NOT TO SCALE.

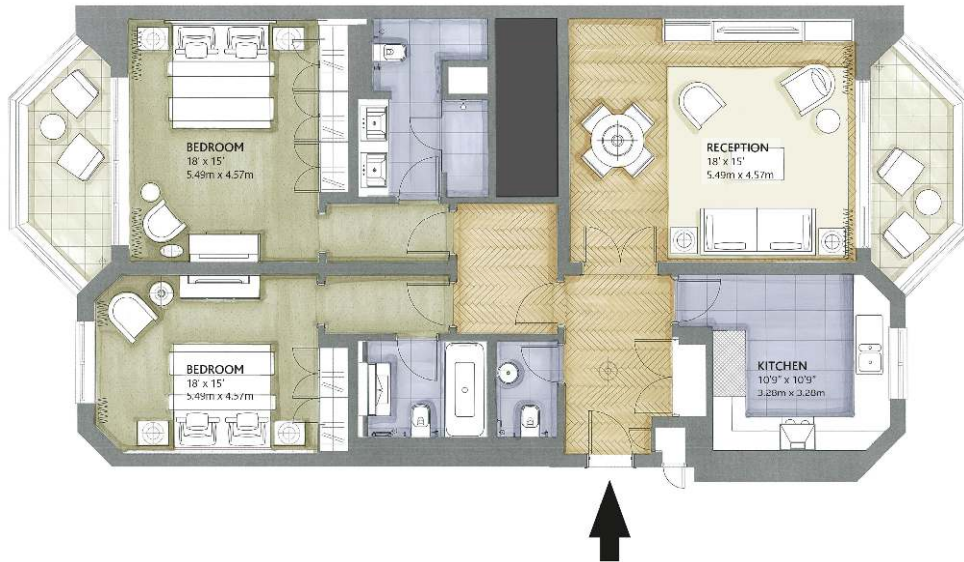
As defined by RICS code of
measuring practice

This floorplan is representative and for
illustrative purposes only. The measurements
provided are approximate only and not to
scale. They should not be relied upon by any
party. Prospective purchasers or tenants are
advised to carry out their own survey if they
require reliable measurements. No
responsibility is taken for any error, omission,
miss-statement or use of data shown.
Details Prepared: 2 December 2020



TWO BEDROOM APARTMENT

1195 sq.ft. | 111 m²



Please note all floor plan measurements and furniture placements are approximate and may not be to scale.

Good to know

Nearby station: Gloucester Road

60m (0 mins) (Line of sight)

Gross floor area: 1194 sq ft (111 m²)

Local authority: Kensington & Chelsea



* Fees may apply. For further details please go to <https://www.douglasandgordon.com/fees-and-terms-tenants>

Gloucester Road Office

22 Gloucester Road, SW7 4RB
grlets@dng.co.uk

020 7589 5252
douglasandgordon.com

