



Queen's Gate Gardens, SW7

£1,350 pw Furnished

£5,850 pcm Fees may apply

1117 sq ft (104 m²) • Newly refurbished • High specification throughout • 2 double bedrooms • Single bedroom/Study • 2 bathrooms • Reception room • Kitchen •



Douglas
& Gordon



A stunning, newly refurbished, three bedroom property with direct lift access in this desirable location on Queen's Gate Gardens. Comprising two spacious double bedrooms and a third single bedroom or study, this property is ideal for professionals or a family. Benefitting from a fully fitted Italian kitchen with breakfast bar, open plan reception with outlook over Atherstone Mews, it is situated close to the amenities of Gloucester Road, South Kensington and a short walk to Hyde Park. This property is not to be missed.

Newly refurbished

High specification throughout

2 double bedrooms

Single bedroom/Study

2 bathrooms

Reception room

Kitchen

Approximate gross floor area:

1117 sq ft (104 m²)

Includes Cellar or Storage
Space where applicable

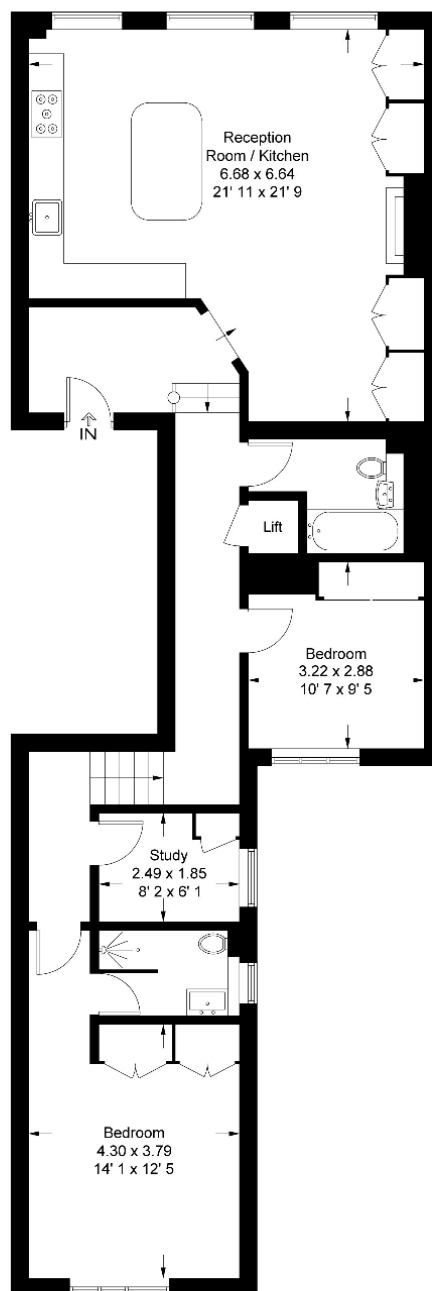
FOR ILLUSTRATIVE PURPOSES ONLY.
NOT TO SCALE.

As defined by RICS code of
measuring practice

This floorplan is representative and for
illustrative purposes only. The measurements
provided are approximate only and not to
scale. They should not be relied upon by any
party. Prospective purchasers or tenants are
advised to carry out their own survey if they
require reliable measurements. No
responsibility is taken for any error, omission,
miss-statement or use of data shown.
Details Prepared: 5 April 2024

Queen's Gate Gardens

Approximate Gross Internal Area = 1081 sq ft / 100.4 sq m
(Excluding Lift)



Third Floor

This plan is not to scale and must be used as layout guidance only. All measurements and areas are approximate and should not be relied upon to provide accurate information. This plan must not be relied upon when making property valuations, design considerations or any other such relevant decisions. We accept no responsibility or liability (whether in contract, tort or otherwise) in relation to any loss whatsoever arising from or in connection with any use of this plan or the adequacy, accuracy or completeness of it or any information within it.

Good to know

Nearby station: Gloucester Road

230m (2 mins) (Line of sight)

Gross floor area: 1117 sq ft (104 m²)

Local authority: Kensington & Chelsea



* Fees may apply. For further details please go to <https://www.douglasandgordon.com/fees-and-terms-tenants>. The information contained in these particulars is for general information purposes only. Douglas & Gordon does not provide information or give any warranty with regards to train, tube, tram lines or flight paths and you are advised to carry out your own research if you have any concern about them.

Battersea Office

41 Paradise Walk, SW3 4JL

battlets@dng.co.uk

020 7924 2002

[douglasandgordon.com](https://www.douglasandgordon.com)

rightmove 


Douglas
& Gordon